



# ESE-10

Multipurpose Color  
Ultrasound System



IMAGING SYSTEMS



# ESE-10

## Multipurpose Color Ultrasound System



ESE-10 offers value added performance, flexible configuration and compact design to meet with varied clinical requirements. Its simplicity and mobility make you good alignment with narrow space.

- Core Technology
- Compact Concept
- Powerful Function

### **VFusion- Spatial Compound Imaging**

Spatial compound imaging on ESE-10 RF platform greatly improves contrast resolution and sharpens the edges.

### **VSpeckle - Speckle Reduction Imaging**

Speckle reduction technology utilizes auto structure detection to eliminate noise artifact and smoothen tissue image.

### **Phase-inversion Harmonic Imaging**

Phase inversion harmonic imaging greatly improves contrast to have better image clarity.

### **ATO - Auto Optimization**

This feature automatically optimizes B mode image based on overall gray-scale to generate better tissue imaging. It also automatically adjusts PRF and baseline of pulse wave Doppler to fit display screen.

### **Auto Trace in PW/CW**

Automatically trace pulse wave of Doppler to display measurement result both in freeze and real time mode.



# Advanced Technologies

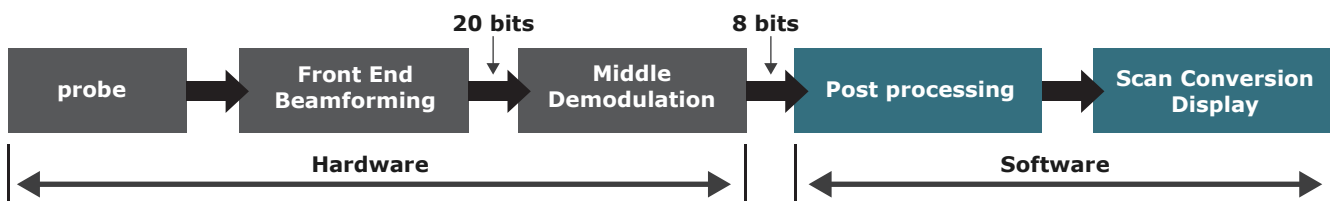
## Core Technology

ESE-10 transplants core technology RF platform into a slim and compact design concept.

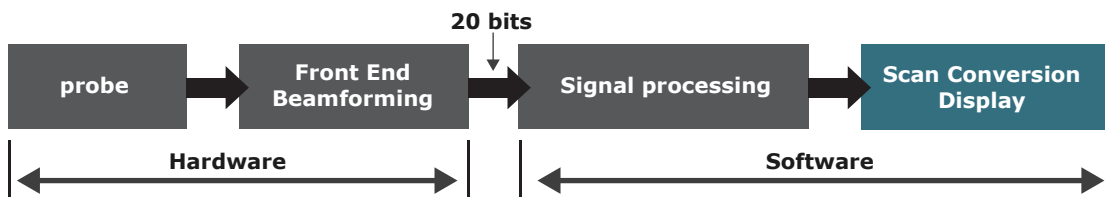
Due to the outstanding signal process technology, it delivers clear image quality.

Slim body, light weight and small footprint make it ideal for small space and more mobility.

### Traditional Ultrasound Platform - Image data processing platform



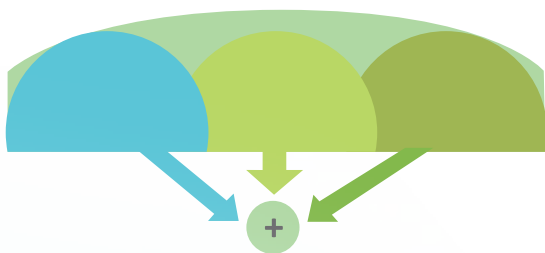
### ESE-10 Innovative RF Ultrasound Platform RF signal data processing platform for better resolution and definition



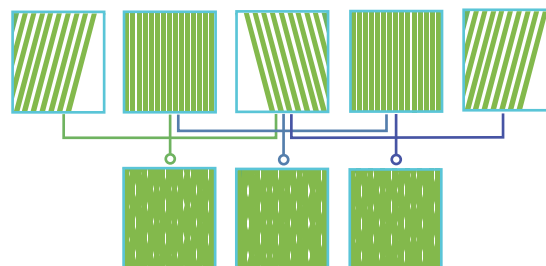
- Bigger data to compute for better image quality.
- Non-linear demodulation to strong signal.
- More accurate and higher step calculation.

- Processing algorithm based on signal data, not image data.
- Flexible algorithm on data processing.

### Frequency Compound Imaging



### Spatial Compound Imaging





## Powerful Function

ESE-10 offers you a lot of convenient and fast operation and measurement tools which make your daily work efficient and comfortable.

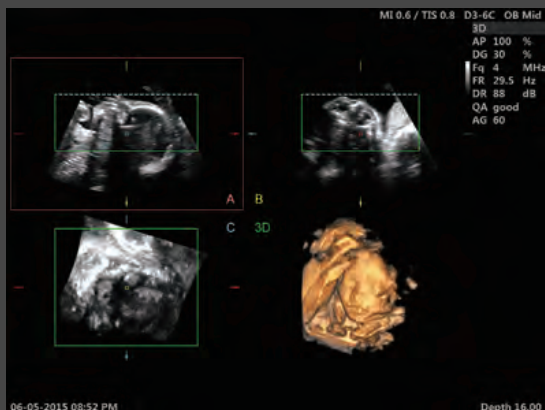
The ESE-10 focuses on your requirement and always brings you more useful solution.

- Triplex
- Auto Optimization
- Easy Compare
- Full Screen
- Pview
- Needle Enhancement
- Smart 3D/4D Function
- Auto Measurement (Auto IMT/ Auto NT/ Auto PW/ CW trace)

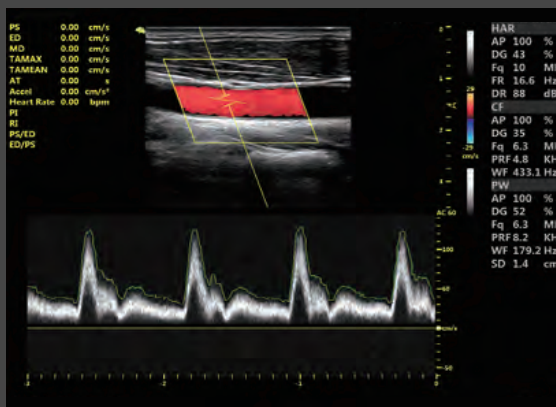




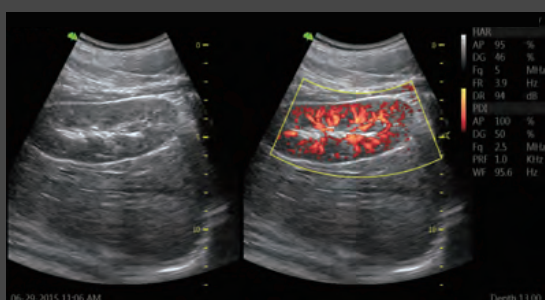
# Clinic Value & Applications



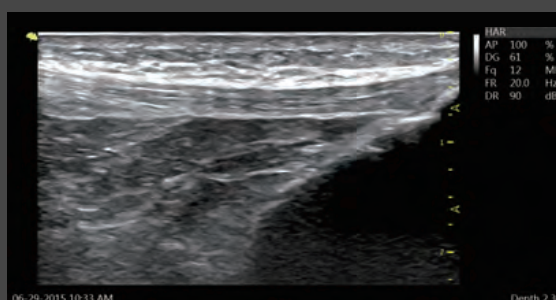
24 weeks fetal face-4D mode



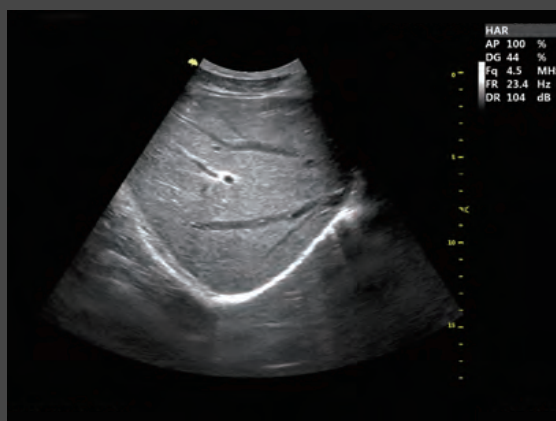
Carotid-PW mode, Auto trace



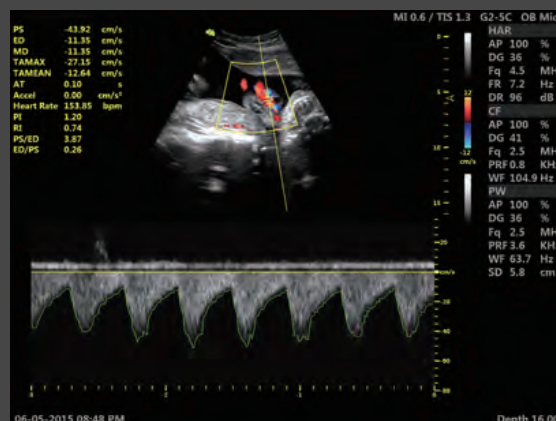
Kidney-dual synchronize mode



Patella tendon-B mode



Liver-B mode



Umbilical cord-PW mode



Fast Connectivity  
Bluetooth/ Wireless Network/ DICOM 3.0



Image post process, synchronization with your mobile phone



### Slim, Compact Design

- 19 inch professional LED monitor gives you more clear view.
- 10 inch smart touch panel enables the operation more convenience.
- Pinless and flat probe connection make you more comfortable.
- 500G HDD ( big enough for volume data storage ).
- B/W video printer slot.







 **Bluetooth™**



## Tecnical Features

### Standard Main Unit

- Innovative RF platform
- 18.5 inch high resolution monitor
- 10 inch touch screen
- Pulse Wave Doppler & HPRF
- Color/Power/Directional Power Doppler Flow Imaging
- Phase-inversion/ Tissue Harmonic Imaging
- Vfusion (Spatial Compound Imaging)
- VSpeckle (Speckle Reduction Imaging)
- Tview (Trapezoid Imaging)
- Easy Compare
- RF-based Zoom
- Full Screen Imaging
- Triplex 2D/Color/PW
- Auto Optimization
- Auto trace in PW/CW
- B+CF simultaneously
- SGC (scanning gain compensation)
- 500G Hard Disk
- 4 USB Ports
- B/W video printer slot
- 2 easy access transducer ports
- Patient database
- Quick store
- Network storage and printing
- Vascular calculations
- Cardiac calculations
- OB calculations and tables
- Gynecological calculations
- Urological calculations
- Renal calculations

### Optional Modules

- Smart 3D/4D Module  
(need to be installed in manufacturer, indicate in the order)
- 3 easy access transducer ports
- CWD  
(need to be installed in manufacturer, indicate in the order)
- Tissue Doppler
- Tomographic display (Mcut)
- VTissue
- Tissue Velocity Imaging (TVI)
- MAM (multi angle M mode, not available in Germany, France, Italy, Norway, USA, Japan)
- Color M mode  
(not available in USA, Canada, Australian, Europe)
- Auto IMT
- Pview
- Needle enhancement
- wireless connection package  
(need to be installed in the factory)
- Support Mobile data transmission via Bluetooth and E-Mail  
(such as 3D/4D baby face)
- Auto NT
- Inversion mode
- Magic cut
- Smart touch panel 3D/4D operation
- Free view
- DICOM export and storage, printer, worklist
- External USB DVDRW

### Optional Transducers

<b>F2-5C</b>	128 element convex probe
<b>D3-6C</b>	128 element wideband 3d/4D convex probe
<b>G4-9E</b>	128 element wideband endocavity probe
<b>G4-9M</b>	128 element wideband micro convex probe
<b>F4-12L</b>	128 element wideband high frequency linear probe
<b>G1-4P</b>	64 element phase array probe

<b>F2-5C</b>	Resuable stainless biopsy guide
<b>F4-12L</b>	Resuable stainless biopsy guide
<b>G1-4P</b>	Resuable stainless biopsy guide
<b>G4-9E</b>	Resuable stainless biopsy guide
	USB Single button foot switch
	USB Double button foot switch



ESSE3 srl, Via Garibaldi 30  
14022 Castelnuovo D.B. (AT)  
Tel +39 011 99 27 706  
Fax +39 011 99 27 506  
e-mail [esse3@chierinet.it](mailto:esse3@chierinet.it)  
web: [www.esse3-medical.com](http://www.esse3-medical.com)

